

**Cookie Information:** We use cookies on this site both for essential site functionality, and to better understand our audience. Please read our [Privacy Policy](#) for more information.



NEWS ▾

NEWS STORY ▾

NOW SHOWING #89: THE WEEK'S TOP EXHIBITIONS



30 March 15

## NOW SHOWING #89: The week's top exhibitions

This week's selection includes works on paper in London, a multi-channel sound installation in Berwick-Upon-Tweed, and a deconstruction of corporate advertising in Oxford.

[exhibitions](#)[now showing](#)

### Ross Birrell and David Harding, Talbot Rice Gallery, Edinburgh

This immersive exhibition by Glasgow-based artists Ross Birrell and David Harding explores complex, multi-layered narratives. Bringing together stories about exile and conflict, it invites viewers to explore the thresholds between music and politics, poetry and place, composition and colour.

Until 2 May 2015, [www.ed.ac.uk/about/museums-galleries/talbot-rice/current/current-exhibitions](http://www.ed.ac.uk/about/museums-galleries/talbot-rice/current/current-exhibitions)

### The Drawing Biennial, The Drawing Room, London

London's popular space dedicated to drawing presents this exhibition and online auction of over 200 unique works on paper. The auction runs for the final two weeks of the exhibition, with each drawing starting at £250. Artists featured include Sonia Boyce, Emma Talbot and Alison Wilding.

Until 30 April 2015, [drawingroom.org.uk](http://drawingroom.org.uk)

### Susan Stenger, Gymnasium Gallery, Berwick-Upon-Tweed

This multi-channel sound installation, *Sound Strata of Coastal Northumberland* – which premiered at [last year's AV Festival](#) – is based on a cross-section diagram of coastal geological formations from the River Tyne to the Scottish border, drawn by local mining engineer Nicholas Wood in 1838. Using the diagram as a graphic score, American artist Susan Stenger has created layering instrumental sounds, melodic patterns and signature rhythms from traditional Northumbrian music and dance. A [special 96-page publication](#) featuring a CD stereo mix of the installation is also available.

Until 26 April 2015, [www.berwickvisualarts.co.uk](http://www.berwickvisualarts.co.uk)

### Eduardo Paolozzi, Fitzwilliam Museum, Cambridge

Featuring Eduardo Paolozzi's printed collages made between 1965 and 1972, this show examines the artist's use of found images and words. Cut from popular magazines and scientific journals, these pieces formulated a dazzling visual and verbal accompaniment to the space-age.

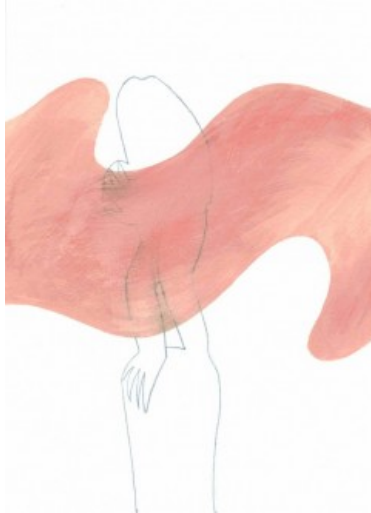
Until 7 June 2015, [www.fitzmuseum.cam.ac.uk](http://www.fitzmuseum.cam.ac.uk)

### Debora Delmar Corp, Modern Art Oxford, Oxford

Working with sculpture, video and installation, Mexican artist [Debora Delmar Corp.](#) explores the way in which globalised consumer culture influences our lives and routines. Intricate assemblages appropriate and reconfigure familiar branded goods and imagery in an attempt to

deconstruct the visual language of corporate advertising.  
Until 17 May 2015, [www.modernartoxford.org.uk](http://www.modernartoxford.org.uk)

Selections chosen by Jack Hutchinson



a-n Editorial



0

0



0 Comments



a-n Editorial



To find work & opportunities

a·n Jobs & opportunities

a·n

Degree Shows Guide/2015

 [TERMS](#)

 [PRIVACY](#)

 [CONTACT](#)

 [SITMAP](#)

© A-N THE ARTISTS INFORMATION CO